

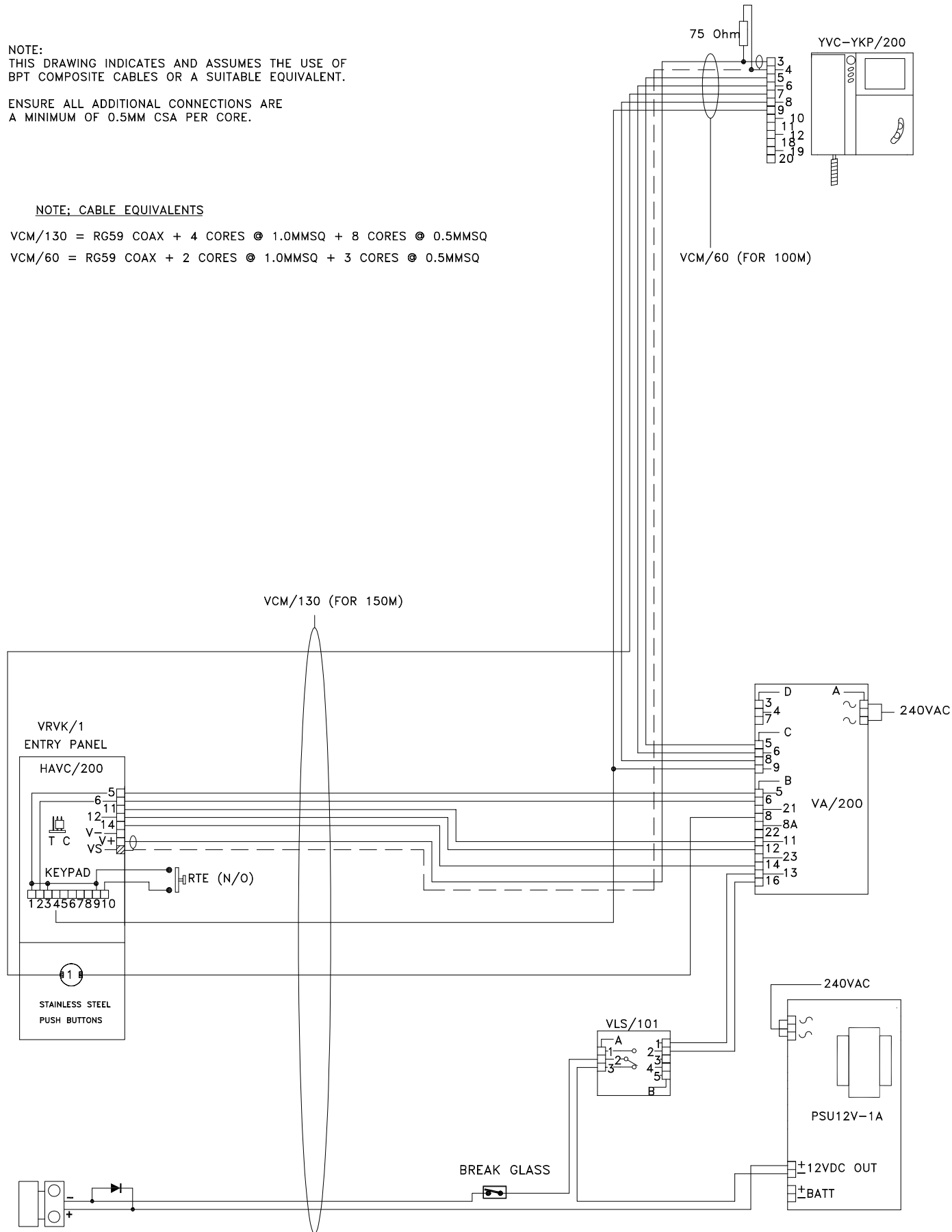
NOTE:  
THIS DRAWING INDICATES AND ASSUMES THE USE OF  
BPT COMPOSITE CABLES OR A SUITABLE EQUIVALENT.

ENSURE ALL ADDITIONAL CONNECTIONS ARE  
A MINIMUM OF 0.5MM CSA PER CORE.

NOTE: CABLE EQUIVALENTS

VCM/130 = RG59 COAX + 4 CORES @ 1.0MMSQ + 8 CORES @ 0.5MMSQ

VCM/60 = RG59 COAX + 2 CORES @ 1.0MMSQ + 3 CORES @ 0.5MMSQ



IT IS VERY IMPORTANT THAT A SUPPRESSION DEVICE BE FITTED  
DIRECTLY ACROSS THE DC RELEASE SUPPLY LINES. IF THE  
RELEASE IS NOT INTERNALLY SUPPRESSED USE A 1N4003

BPT (UK) LTD. HERTS. ENGLAND	PREPARED FOR INSTALLER INFORMATION	DATE: 26/07/04	DRAWN: RC
		REVISED:	
DRAWING TITLE:	SINGLE HOUSE INSTALLATION USING 1 VR VIDEO ENTRY PANEL WITH KEYPAD	DRAWING No: B-1V1Y1UK	